

- Belt width 122 - 182 cm (48" - 72")
- Heat Chamber length 290 cm (114")
- Multiple chambers
- Cold chamber length 80 cm

## GAL series gas fired Tunnel dryer

GAL series gas fired tunnel dryer is affordable multitask tunnel dryer. Segment design makes it easy to choose productivity and size according to space available. Gas can be natural gas or propane. The choice of belt widths (48" - 72") determines the max. curing element size. Compact transportation package foot print lowers transport cost and provides easy floor access.

Conveyor belt system driven by AC gear reducer controlled with frequency converter drive. Belt speed is readable on LCD display. Remote belt speed adjustment possibility.

Low energy consumption is assured with 150 mm insulated walls, efficient heat exchanger and segment design. Exhaust of gas fumes is separated from fumes of ink polymerization. It assures no interaction of gas burning process with drying.

### **TRUE ON BELT TEMPERATURE reading**

The temperature sensor after calibration is giving true readings of hot air on belt level. All heat chamber design is symmetric across the belt, temperature distribution across the belt is even and symmetric

### **SEGMENTAL EXPANDABLE DESIGN**

Dryer is build with segments. Three belt widths available: 48", 60", 72". One heat chamber length possible: 114" (290 cm). One cold chamber length available: 32" (80 cm). All segments are build with smaller element bolted together. It can be Disassembled into basic parts and installed throw narrow doors or staircase.

### **MULTI-FUEL BURNER**

Due to heat exchanger design its possible to use heavy oil burner or multi-fuel burner. It gives great fuel flexibility and use of high volume dryers in any locations.

## STANDARD FEATURES

### HEAT MANAGEMENT

- We use all-in best on market, burners suited with model to dryer size. PID regulators gives temperature stability and less burner switching cycles. Heat exchanger however increase the innercion of dryer working as heat accumulator. It reduce burner switching and isolates gas fumes from heat chamber,

### AIR CIRCULATION

- Strong air circulation, even spread across the belt
- Blower motors are temperature isolated with easy maintenance access

### SMART DESIGN

- Smart design do not cost more in manufacturing and gives all advantages of having efficient and multi functional dryer

### TEMPERATURE STABILITY

- As described above temperature might mean different things for different curing process .Good understanding of this knowledge will help in curing process. Whatever MODE we work with DEL-series dryer it stays temperature and power density stable.

### ENERGY EFFICIENCY

- 150 mm insulated walls
- adjustable in/out shutters
- adjustable exhaust chimney for low fumes losses

### CONVEYOR SYSTEM

- Heat resistant Fiberglas Teflon coated, heavy duty belt
- Driven by direct-on shaft AC reducer, controlled with frequency converter
- industrial drive with LCD speed display
- Both direction operation

### WARRANTY & SERVICE

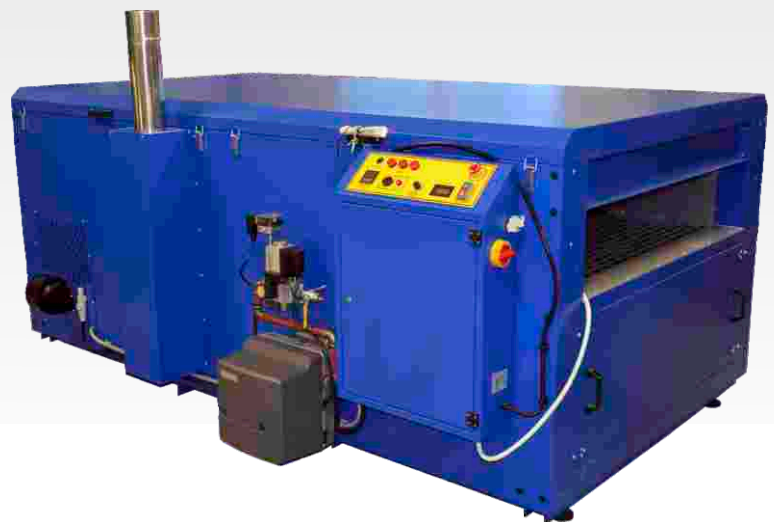
- 2 year warranty
- service agreement on special conditions

### OPTIONS

- 3 color light tower for dryer stage signalization
- customized heat chamber and inlet / outlet
- IR heat chamber

### CONTROL INTERFACE

- Control interface consists of PID temperature regulator
- belt speed regulation with LCD visualization
- heating ON/OFF switch



	GAL-48 series		GAL-60 series		GAL-72 series	
Belt Width	122 cm (48")		152 cm (60")		182 cm (72")	
MODELS	GAL-48 146	GAL-48 292	GAL-60 146	GAL-60 292	GAL-72 146	GAL-72 292
Electrical requirements 400 VAC, 3 PH	1 kW, 16A plug	2 kW, 16A plug	1 kW, 16A plug	2 kW, 16A plug	2 kW, 16A plug	4 kW, 16A plug
Average Natural gas consumption m <sup>3</sup> /h	2.5 m <sup>3</sup> /h	4.5 m <sup>3</sup> /h	3 m <sup>3</sup> /h	5 m <sup>3</sup> /h	3.5 m <sup>3</sup> /h	5.5 m <sup>3</sup> /h
Heat chamber length	290 cm	2 x 290 cm	290 cm	2 x 290 cm	290 cm	2 x 290 cm
Cold chamber length	80 cm	2 x 80 cm	80 cm	2 x 80 cm	80 cm	2 x 80 cm
Hood length	2 x 30 cm	2 x 30 cm	2 x 30 cm	2 x 30 cm	2 x 30 cm	2 x 30 cm
Inlet / Outlet length	90 / 90 cm	90 / 90 cm	120 / 120 cm	120 / 120 cm	120 / 120 cm	120 / 120 cm
Overall length	610 cm	980 cm	670 cm	1040 cm	670 cm	1040 cm
Shipping weight	1700 kg	3200 kg	1900 kg	3600 kg	2100 kg	4000 kg
Air circulation	Heat insulated motor , symmetrical flow					